

# Wireless Bell Kit

## Installation Instructions

The wireless bell kit has two components:

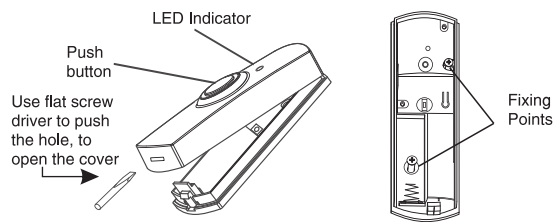


Figure 1 - Push Button (Transmitter/Remote)

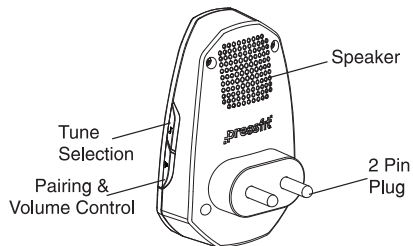


Figure 2 - Bell (Receiver)

### Installing Battery in the Bell Push (Transmitter/Remote)

1. Remove the front cover of the remote by pushing a flat blade screwdriver into the slot at the bottom (see Fig.1).
2. Remove the paper strip between the 12V 23A battery (included) and the positive (+) side. Put the front cover back.

# ECHO

Wireless Bells

**Note:** The bell and the remote have been paired during production. Once the battery is installed in the remote and bell is powered on, press the push button to ensure that the remote causes the bell to ring.

**IF THE BELL DOES NOT RING, SEE TROUBLESHOOTING.**

**TO CHANGE THE DEFAULT TUNE, FOLLOW THE STEPS BELOW**

### Pairing & Tune Selection (See Figure 3)

1. The package is already paired. If you need to pair a remote and a bell, or change the tune, press the Pairing button (🔗) on the bell for 4-5 seconds and you will hear a double beep. The bell is in Pairing state.
2. Press the Tune Selection button (🎵) on the bell to select the tune you want for the remote.
3. After the tune has been selected, press the button on the remote once. The bell will play a beep to indicate that the new remote is saved with the selected tune.
4. To complete pairing, press the Pairing button (🔗) on the bell.
5. If you want to pair more remotes, repeat the above process one by one for each remote.

### Unpairing:

1. To clear all codes on a bell and unpair it with all remotes, first switch off the power supply.
2. Then, hold the Tune Selection Button (🎵) and simultaneously switch the power back on. Keep holding the Tune Selection button (🎵) for 6-8 seconds and the bell will be reset.

### Volume Adjustment:

There are four volume levels on this bell. Press the volume adjustment button (🔊) to set the bell at your desired volume.

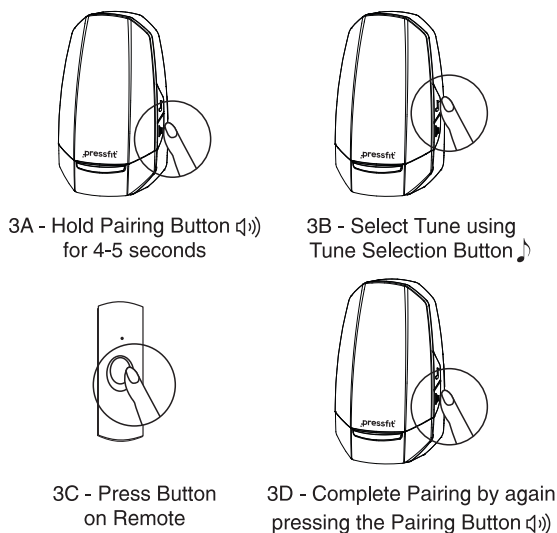


Figure 3 - Pairing Bell and Remote

### Troubleshooting:

If the bell does not work,

1. Make sure to remove the insulating paper strip from the remote.
2. Verify battery installation is correct, noting polarity.
3. Try unpairing and pairing the remote back again using the above-mentioned steps.
4. Try a fresh battery in the remote.
5. Ensure that the remote is not mounted on metal, near metal studs or on a hot surface.
6. Try a new location for the bell.

# pressfit®

# ECHO

Wireless Bells

### An Unparalleled Choice of 48 Tunes Available

- |                                   |                               |
|-----------------------------------|-------------------------------|
| 1. House Bell 1                   | 25. Room No. 3                |
| 2. House Bell 2                   | 26. Room No. 4                |
| 3. Airplane DD                    | 27. Room No. 5                |
| 4. Electronic DD                  | 28. Room No. 6                |
| 5. Basic DD 1                     | 29. Room No. 7                |
| 6. Gong DD                        | 30. Room No. 8                |
| 7. Westminster DD                 | 31. Melody 1                  |
| 8. Hotel Call Chime               | 32. Melody 2                  |
| 9. Hotel Call Chime 2             | 33. Melody 3                  |
| 10. Elevator Chime                | 34. Beethoven - Fur Elise     |
| 11. Airport Announcement          | 35. Mozart - Rondo alla Turca |
| 12. Marimba 1                     | 36. Jingle Bells - 1          |
| 13. Marimba 2                     | 37. Jingle Bells - 2          |
| 14. Marimba 3                     | 38. Merry Christmas           |
| 15. Marimba 4                     | 39. Oh, Susanna               |
| 16. Please Open the Door - Male   | 40. Super Mario Bros.         |
| 17. Please Open the Door - Female | 41. Gayatri Mantra - Female   |
| 18. Next Patient Please - Male    | 42. Gayatri Mantra - Male     |
| 19. Next Patient Please - Female  | 43. Om Namah Shivaay          |
| 20. Please Come In                | 44. Hare Krishna              |
| 21. I Need Assistance - Male      | 45. Hare Rama                 |
| 22. I Need Assistance - Female    | 46. Buddham Saranam Gacchami  |
| 23. Room No. 1                    | 47. Azan - Short              |
| 24. Room No. 2                    | 48. Azan - Long               |

Functional range may be adversely affected by one or more of the following factors: weather, radio frequency interference, low remote battery and obstructions between the remote and the bell.

**For extra bell receivers and remotes, contact us at [sales@pressfitindia.com](mailto:sales@pressfitindia.com) or through [www.pressfitindia.com](http://www.pressfitindia.com).**